



Thursday, December 8
6:30pm – 7:30pm

PSAT Results

- Score Report
- Keep in College Planning Binder
- Naviance

Understanding Your PSAT/NMSQT Results

4 Major Parts of Your PSAT/NMSQT Results

Your Scores

Your Skills

Your Answers

Next Steps

3 Test Sections

Critical Reading

Mathematics

Writing Skills

Name: STUDENT, MIA B Year: 2011 Grade: 11 School Code: 123456 Optional Code: 00 Student Copy

projected SAT™ scores at www.collegeboard.org/sat/scores

Score Range Scores in this

Information you provided on your answer sheet

Click Here for Information

Your code below

Online Access Code
A0267014CP

Organization & Means
2 of 8 questions correct (2 omitted)

Data, Statistics & Probability
6 of 6 questions correct (0 omitted)

Correctly Formed Sentences
1 of 6 questions correct (4 omitted)

Understanding Literary Elements

Get suggestions for improving your skills before you take the SAT.

Relationships of Sentences & Paragraphs

See test questions and review explanations of the answers at


Next Steps

On test day, you told us that you're interested in **Sport & Fitness Administration/Management**. To learn more about college majors, visit MyCollegeQuickStart™. There you can also:

- Learn about related careers
- Search for colleges
- Take a personality test

Take the next step today! Go to www.collegeboard.org/quickstart and sign in using your code below.

Online Access Code
A0267014CP



Your Scores

Score

You can see your projected SAT score online in My College QuickStart (www.collegeboard.org/quickstart).

Score Range


Percentile

If you are a junior, your scores are compared to those of other juniors.


If you are a sophomore or younger student, your scores are compared to those of sophomores.

Name: **STUDENT, MAB** Year: **2011** Grade: **11** School Code: **123456** Optional Code: **00** Student Copy

Critical Reading




50



20 80

46 to 54



You scored higher than **55%** of juniors.

<p>You can also ask your counselor for a copy of your test book; both versions can review the questions.</p> <p>Key</p> <p>✓ Correct ✗ Error ◊ Incorrect m Medium h Hard</p> <p>Scoring</p> <ul style="list-style-type: none"> • Correct answer = PLUS 1 POINT • Dotted answers = 0 POINT • Wrong answers to multiple-choice questions = MINUS 1/4 POINT • Wrong answers to math questions 26-38 = NO POINTS • Points are totaled, then converted to score at the 20-80 scale. 	<table border="1"> <tr><td>5 B ✓ h</td><td>29 C ✓ e</td><td>1 B ✓ e</td><td>10 D A h</td><td>8 E ✓ h</td><td>25 D A m</td></tr> <tr><td>6 D ✓ e</td><td>30 D ✓ m</td><td>6 B ✓ e</td><td>20 D C h</td><td>9 D ✓ e</td><td>26 A ✓ e</td></tr> <tr><td>7 B ✓ m</td><td>31 A ✓ m</td><td>7 C ✓ e</td><td>21 B ✓ h</td><td>10 C ✓ m</td><td>27 A ✓ e</td></tr> <tr><td>8 D ✓ e</td><td>32 E ✓ h</td><td>8 A ✓ m</td><td>22 C ✓ e</td><td>11 B ✓ h</td><td>28 C A +</td></tr> <tr><td>9 E ✓ m</td><td>33 B A h</td><td>9 B ✓ m</td><td>23 A ✓ m</td><td>12 B ✓ m</td><td>29 C A m</td></tr> <tr><td>10 E ✓ h</td><td>34 D ✓ e</td><td>10 C ✓ m</td><td>24 D ✓ m</td><td>13 D ✓ m</td><td>30 D ✓ m</td></tr> <tr><td>11 D ✓ h</td><td>35 A ✓ e</td><td>11 B ✓ m</td><td>25 B ✓ m</td><td>14 D ✓ m</td><td>31 B A h</td></tr> <tr><td>12 C ✓ m</td><td>36 A +</td><td>12 C ✓ m</td><td>26 D ✓ e</td><td>15 C ✓ e</td><td>32 A ✓ h</td></tr> <tr><td>13 A ✓ m</td><td>37 C ✓ m</td><td>13 D ✓ m</td><td>27 C A m</td><td>16 E ✓ m</td><td>33 D C h</td></tr> <tr><td>14 B A m</td><td>38 B ✓ m</td><td>14 A D h</td><td>28 A B m</td><td>17 D ✓ e</td><td>34 D ✓ m</td></tr> <tr><td>15 A ✓ e</td><td>39 B C h</td><td></td><td></td><td>18 A ✓ m</td><td>35 E A +</td></tr> <tr><td>16 C ✓ m</td><td>40 C A h</td><td></td><td></td><td>19 B ✓ m</td><td>36 A D +</td></tr> <tr><td>17 A ✓ e</td><td>41 D ✓ h</td><td></td><td></td><td>20 E ✓ m</td><td>37 B ✓ m</td></tr> <tr><td>18 E ✓ m</td><td>42 C ✓ m</td><td></td><td></td><td></td><td>38 C ✓ m</td></tr> <tr><td>19 E ✓ m</td><td>43 E ✓ m</td><td></td><td></td><td></td><td>39 C ✓ h</td></tr> <tr><td>20 B ✓ m</td><td>44 C ✓ m</td><td></td><td></td><td></td><td></td></tr> <tr><td>21 E ✓ m</td><td>45 D ✓ m</td><td></td><td></td><td></td><td></td></tr> <tr><td>22 D B h</td><td>46 A B m</td><td></td><td></td><td></td><td></td></tr> <tr><td>23 E ✓ m</td><td>47 C ✓ m</td><td></td><td></td><td></td><td></td></tr> <tr><td>24 A ✓ m</td><td>48 C A m</td><td></td><td></td><td></td><td></td></tr> </table>	5 B ✓ h	29 C ✓ e	1 B ✓ e	10 D A h	8 E ✓ h	25 D A m	6 D ✓ e	30 D ✓ m	6 B ✓ e	20 D C h	9 D ✓ e	26 A ✓ e	7 B ✓ m	31 A ✓ m	7 C ✓ e	21 B ✓ h	10 C ✓ m	27 A ✓ e	8 D ✓ e	32 E ✓ h	8 A ✓ m	22 C ✓ e	11 B ✓ h	28 C A +	9 E ✓ m	33 B A h	9 B ✓ m	23 A ✓ m	12 B ✓ m	29 C A m	10 E ✓ h	34 D ✓ e	10 C ✓ m	24 D ✓ m	13 D ✓ m	30 D ✓ m	11 D ✓ h	35 A ✓ e	11 B ✓ m	25 B ✓ m	14 D ✓ m	31 B A h	12 C ✓ m	36 A +	12 C ✓ m	26 D ✓ e	15 C ✓ e	32 A ✓ h	13 A ✓ m	37 C ✓ m	13 D ✓ m	27 C A m	16 E ✓ m	33 D C h	14 B A m	38 B ✓ m	14 A D h	28 A B m	17 D ✓ e	34 D ✓ m	15 A ✓ e	39 B C h			18 A ✓ m	35 E A +	16 C ✓ m	40 C A h			19 B ✓ m	36 A D +	17 A ✓ e	41 D ✓ h			20 E ✓ m	37 B ✓ m	18 E ✓ m	42 C ✓ m				38 C ✓ m	19 E ✓ m	43 E ✓ m				39 C ✓ h	20 B ✓ m	44 C ✓ m					21 E ✓ m	45 D ✓ m					22 D B h	46 A B m					23 E ✓ m	47 C ✓ m					24 A ✓ m	48 C A m					<table border="1"> <thead> <tr> <th>Correct Answer</th> <th>Your Answer</th> </tr> </thead> <tbody> <tr><td>39 7</td><td>✓ m</td></tr> <tr><td>30 2</td><td>0 m</td></tr> <tr><td>31 4.5 or 90</td><td>0 m</td></tr> <tr><td>32 1000</td><td>✓ m</td></tr> <tr><td>33 10, 12, 14, or 16</td><td>✓ h</td></tr> <tr><td>34 85 or 16</td><td>0 h</td></tr> <tr><td>35 39</td><td>✓ h</td></tr> <tr><td>36 100</td><td>50.0 h</td></tr> <tr><td>37 82</td><td>4.2 m</td></tr> <tr><td>24 8</td><td>10 h</td></tr> </tbody> </table> <p>Find out why you missed questions www.collegeboard.org/quickstart</p>	Correct Answer	Your Answer	39 7	✓ m	30 2	0 m	31 4.5 or 90	0 m	32 1000	✓ m	33 10, 12, 14, or 16	✓ h	34 85 or 16	0 h	35 39	✓ h	36 100	50.0 h	37 82	4.2 m	24 8	10 h
5 B ✓ h	29 C ✓ e	1 B ✓ e	10 D A h	8 E ✓ h	25 D A m																																																																																																																																											
6 D ✓ e	30 D ✓ m	6 B ✓ e	20 D C h	9 D ✓ e	26 A ✓ e																																																																																																																																											
7 B ✓ m	31 A ✓ m	7 C ✓ e	21 B ✓ h	10 C ✓ m	27 A ✓ e																																																																																																																																											
8 D ✓ e	32 E ✓ h	8 A ✓ m	22 C ✓ e	11 B ✓ h	28 C A +																																																																																																																																											
9 E ✓ m	33 B A h	9 B ✓ m	23 A ✓ m	12 B ✓ m	29 C A m																																																																																																																																											
10 E ✓ h	34 D ✓ e	10 C ✓ m	24 D ✓ m	13 D ✓ m	30 D ✓ m																																																																																																																																											
11 D ✓ h	35 A ✓ e	11 B ✓ m	25 B ✓ m	14 D ✓ m	31 B A h																																																																																																																																											
12 C ✓ m	36 A +	12 C ✓ m	26 D ✓ e	15 C ✓ e	32 A ✓ h																																																																																																																																											
13 A ✓ m	37 C ✓ m	13 D ✓ m	27 C A m	16 E ✓ m	33 D C h																																																																																																																																											
14 B A m	38 B ✓ m	14 A D h	28 A B m	17 D ✓ e	34 D ✓ m																																																																																																																																											
15 A ✓ e	39 B C h			18 A ✓ m	35 E A +																																																																																																																																											
16 C ✓ m	40 C A h			19 B ✓ m	36 A D +																																																																																																																																											
17 A ✓ e	41 D ✓ h			20 E ✓ m	37 B ✓ m																																																																																																																																											
18 E ✓ m	42 C ✓ m				38 C ✓ m																																																																																																																																											
19 E ✓ m	43 E ✓ m				39 C ✓ h																																																																																																																																											
20 B ✓ m	44 C ✓ m																																																																																																																																															
21 E ✓ m	45 D ✓ m																																																																																																																																															
22 D B h	46 A B m																																																																																																																																															
23 E ✓ m	47 C ✓ m																																																																																																																																															
24 A ✓ m	48 C A m																																																																																																																																															
Correct Answer	Your Answer																																																																																																																																															
39 7	✓ m																																																																																																																																															
30 2	0 m																																																																																																																																															
31 4.5 or 90	0 m																																																																																																																																															
32 1000	✓ m																																																																																																																																															
33 10, 12, 14, or 16	✓ h																																																																																																																																															
34 85 or 16	0 h																																																																																																																																															
35 39	✓ h																																																																																																																																															
36 100	50.0 h																																																																																																																																															
37 82	4.2 m																																																																																																																																															
24 8	10 h																																																																																																																																															

Next Steps

Go online to see your projected SAT scores, learn how to improve them, and find critical college and career planning information.

On test day, you told us that you're interested in **Sport & Fitness Administration** Management.

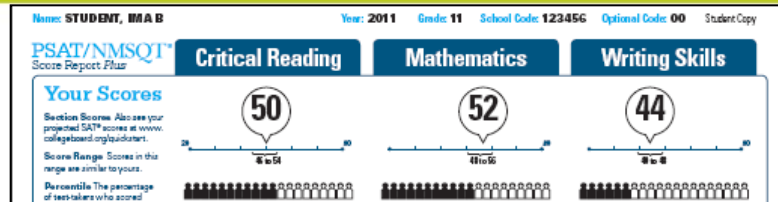
To learn more about college majors, visit My College QuickStart™. There you can also:

- Search for colleges
- Take a personality test

Take the next step today! Go to www.collegeboard.org/quickstart and sign in using your code below.

Online Access Code
A#2670146P

National Merit Scholarship Corporation Information



National Merit Scholarship Corporation

National Merit Scholarship Corporation (NMSC) uses a Selection Index based on PSAT/NMSQT® scores as an initial screen of over 1.5 million students who enter its scholarship programs. (See reverse for more information.)

Your Selection Index

Sum of scores in critical reading, mathematics and writing skills.

146

Percentile

Compares your performance with college-bound juniors.

47

Entry Requirements

(Information you provided on your answer sheet.)

High school student:
Yes

U.S. citizenship:
Yes

Year to complete high school and enroll full-time in college:
2013

Years to be spent in grades 9–12:
4

Eligibility Information

If your Selection Index places you among the 55,000 high scorers who qualify for program recognition, you will be notified next September.

The Selection Index is the sum of your critical reading, mathematics and writing skills scores.

If it has an asterisk, you do not meet all of the eligibility requirements for the competition.

The Percentile compares your performance to that of other college-bound juniors.

The Entry Requirements section displays information you provided on your answer sheet.

CRITICAL READING
6 of 8 questions correct (4 omitted)

MATHEMATICS
6 of 8 questions correct (4 omitted)

WRITING SKILLS
1 of 6 questions correct (4 omitted)

Relationships of Sentences & Paragraphs
2 of 6 questions correct (4 omitted)

Question	Correct Answer	Your Answer
1	A	h
2	G	h
3	G	h
4	C	h
5	H	h
6	H	h
7	C	h
8	A	h
9	H	h
10	C	h
11	H	h
12	C	h
13	D	h
14	A	h
15	E	h
16	E	h
17	A	h
18	C	h
19	D	h
20	D	h
21	B	h
22	C	h
23	A	h
24	D	h
25	B	h
26	D	h
27	C	h
28	A	h
29	C	h
30	A	h
31	E	h
32	G	h
33	E	h
34	E	h
35	D	h
36	H	h
37	H	h
38	H	h
39	H	h
40	H	h

20-18 • NO LIST POINTS
• Points are bolded when correct

20 D h h 21 D h h 22 D h h 23 E h h 24 D h h 25 A h h 26 A h h 27 C h h 28 C h h 29 C h h 30 A h h 31 E h h 32 G h h 33 E h h 34 E h h 35 D h h 36 H h h 37 H h h 38 H h h 39 H h h 40 H h h

Take the next step today! Go to www.collegeboard.org/quickstart and sign in using your code below.

Online Access Code
A#267014CP

PSAT Results

- **National Merit**

- Commended: 202-215

- Semifinalist: 216-240

- **National Achievement**

- Outstanding Participant: 175-189

- Semifinalist: 190 - 240

Your Skills

Name: **STUDENT, M A B** Year: **2011** Grade: **11** School Code: **123456** Optional Code: **00** Student Copy

PSAT/NMSQT™ Score Report Plus

Critical Reading **Mathematics** **Writing Skills**

Your Scores

Section Scores. Also see your projected SAT™ scores at www.collegeboard.org/scores.

50 **52** **44**

Your Skills

These skill categories can help you understand your score and focus your study efforts before you take the SAT.

To learn more about your skills and review suggestions for improvement based on your test performance, visit www.collegeboard.com/quickstart and sign in using your code below.

Online Access Code
A02670146P

Determining the Meaning of Words

9 of 15 questions correct (0 omitted)

Author's Craft: Style, Tone & Technique

3 of 5 questions correct (0 omitted)

Reasoning & Inference

8 of 10 questions correct (2 omitted)

Organization & Ideas

2 of 8 questions correct (2 omitted)

Understanding Literary Elements

4 of 10 questions correct (0 omitted)

Number & Operations

12 of 15 questions correct (1 omitted)

Algebra & Functions

5 of 5 questions correct (0 omitted)

Geometry & Measurement

8 of 10 questions correct (2 omitted)

Data, Statistics & Probability

6 of 8 questions correct (1 omitted)

Get suggestions for improving your skills before you take the SAT.
www.collegeboard.com/quickstart

Grammatical Relationships between Words

3 of 12 questions correct (1 omitted)

Words & Phrases Used to Modify or Compare

1 of 5 questions correct (2 omitted)

Phrases & Clauses

6 of 10 questions correct (2 omitted)

Correctly Formed Sentences

1 of 6 questions correct (4 omitted)

Relationships of Sentences & Paragraphs

2 of 6 questions correct (3 omitted)

See how you did on each skill. The same skills are tested on the SAT.

You can try hundreds of practice questions, organized by skill, online in My College QuickStart (www.collegeboard.org/quickstart).

Find out why you missed questions.
www.collegeboard.com/quickstart

6	D	*	26	A	✓	*
7	A	C	27	A	✓	*
8	C	E	28	C	A	*
9	C	D	29	C	A	*
10	A	C	30	D	✓	*
11	B	E	31	B	A	h
12	B	C	32	A	✓	h
13	D	E	33	D	C	h
14	D	C	34	D	✓	*
15	S	C	35	S	A	*
16	B	✓	36	A	D	*
17	D	✓	37	B	✓	*
18	A	B	38	C	✓	*
19	C	E	39	C	✓	h
20	E	✓				

NEXT STEPS

On test day, you told us that you're interested in **Sport & Fitness Administration/Management**. To learn more about college majors, visit My College QuickStart™. There you can also:

- Learn about related careers
- Search for colleges
- Take a personality test

Take the next step today! Go to www.collegeboard.org/quickstart and sign in using your code below.

Online Access Code
A02670146P

Your Answers

You will get your test book back with your PSAT/NMSQT results, so that you can review the questions.

You can also review each test question in My College QuickStart.

Name: **STUDENT, MAB** Year: **2011** Grade: **11** School Code: **123456** Optional Code: **00** Student Copy

PSAT/NMSQT® Score Report Plus

Your Score
Section Score projected SAT college-bound Score Range are similar
Percentile of test-takers below your score

Your Score
These skills are your strengths. You did well on these questions. To learn more and review our improvement test performance, visit www.collegeboard.org/quickstart and enter your code below.

Your Answer
See test question explanations at www.collegeboard.org/quickstart. You can also ask your counselor for test book back review the questions.

Key
✓ Correct
○ Incorrect
x Incomplete

Scoring
• Correct answer
• Omitted answer
• Wrong answer
• Wrong answer
• Wrong answer
• Points are broken down as follows

Next Step
Go online to www.collegeboard.org/quickstart to see your SAT scores, learn more about colleges and careers, and improve your college and career information.

Question	Correct Answer	Your Answer	Difficulty
1	A	✓	e
2	B	✓	e
3	A	C	m
4	C	A	h
5	B	E	h
6	D	✓	e
7	B	✓	m
8	D	o	e
9	B	✓	m
10	E	B	h
11	D	✓	h
12	C	✓	m
13	A	✓	m
14	B	A	m
15	A	✓	e
16	C	✓	m
17	A	✓	e
18	E	✓	m
19	B	✓	m
20	B	E	m
21	E	✓	m
22	D	B	h
23	E	✓	m
24	A	✓	m

Mathematics

52
You scored higher than 57% of juniors.

44
You scored higher than 39% of juniors.

Lightbulb Information
If your Selection Index places you among the 55,000 high achievers who qualify for program recognition, you will be notified next September.

Number & Operations
2 of 16 questions correct (1 omitted)

Algebra & Functions
0 of 6 questions correct (0 omitted)

Geometry & Measurement
0 of 18 questions correct (2 omitted)

Data, Statistics & Probability
0 of 8 questions correct (1 omitted)

Grammatical Relationships between Words
3 of 12 questions correct (1 omitted)

Words & Phrases Used to Modify or Compare
1 of 6 questions correct (2 omitted)

Phrases & Clauses
6 of 10 questions correct (2 omitted)

Correctly Formed Sentences
1 of 6 questions correct (4 omitted)

Relationships of Sentences & Paragraphs
2 of 6 questions correct (3 omitted)

Check suggestions for improving your skills before you take the SAT.
www.collegeboard.org/quickstart

Question	Correct Answer	Your Answer	Difficulty
1	D	✓	m
2	G	✓	h
3	G	✓	h
4	C	✓	h
5	B	✓	h
6	B	✓	h
7	C	✓	h
8	A	✓	h
9	B	✓	h
10	C	✓	h
11	B	✓	h
12	C	✓	h
13	D	✓	h
14	D	✓	h
15	C	✓	h
16	B	✓	h
17	D	✓	h
18	A	✓	h
19	C	✓	h
20	C	✓	h
21	D	✓	h
22	A	✓	h
23	C	✓	h
24	C	✓	h

Find out why you missed questions.
www.collegeboard.com/sat/quickstart

Take the next step today! Go to www.collegeboard.org/quickstart and sign in using your code below.

Also Access Code
A#267014CP

Your Answers: Student-Produced Responses

Some of the math problems required you to grid in answers instead of selecting an option. For these questions, you will see the correct answer(s) written out.

Name: **STUDENT, MAB** Year: **2011** Grade: **11** School Code: **123456** Optional Code: **00** Student Copy

PSAT/NMSQT™ Score Report Plus

Critical Reading

Your Scores

Section Score: **50**

Score Range: 4 to 64

Percentile: You scored higher than **55%** of juniors.

Mathematics

Section Score: **52**

Score Range: 0 to 60

Percentile: You scored higher than **57%** of juniors.

Writing Skills

Section Score: **44**

Score Range: 0 to 6

Percentile: You scored higher than **39%** of juniors.

National Merit Scholarship Corporation

Year Selection Index: Sum of scores in critical reading, mathematics and writing skills: **146**

Percentile: Compares your performance with college-bound juniors: **47**

Entry Requirements: U.S. citizenship: **Yes**; High school student: **Yes**; Year to complete high school and enroll full-time in college: **2013**; Years to be spent in grades 9-12: **4**

Eligibility Information: If your Selection Index places you among the 55,000 high scorers who qualify for program participation, you will be notified next September.

Your Skills

Deconstructing the Meaning of Words: 9 of 15 questions correct (3 omitted)

Number & Operations: 12 of 15 questions correct (3 omitted)

Algebra & Functions: 5 of 6 questions correct (0 omitted)

Grammatical Relationships between Words: 3 of 12 questions correct (1 omitted)

Words & Phrases Used to Modify or Compare: 1 of 6 questions correct (2 omitted)

Reasoning & Information: 6 of 6 questions correct (0 omitted)

Phrases & Clauses: 1 of 6 questions correct (2 omitted)

	Correct Answer	Your Answer	
29	7	✓	m
30	3	✓	m
31	4.5 or 9/2	✓	m
32	1000	✓	m
33	10, 12, 14, or 16	✓	h
34	8/5 or 1.6	✓	h
35	29	✓	h
36	108	50.9	h
37	42	4.2	m
38	8	10	h

Online Access Code: **A02670146P**

Your Answers

See test questions and explanations of the and www.collegeboard.org/psat-nmsqt-quickstart.

You can also ask your counselor for a copy of test book back so you review the questions.

Key

✓ Correct ✗ Incorrect

○ Omitted ✗ Incomplete

Scoring

- Correct answer = PLUS 1 PT
- Omitted answer = 0 POINT
- Wrong answer to multiple-choice question = MINUS 1/4 PT
- Wrong answer to math is 20-28 = NO LIST POINTS
- Points are totaled then converted to the 20-80 scale.

Next Steps

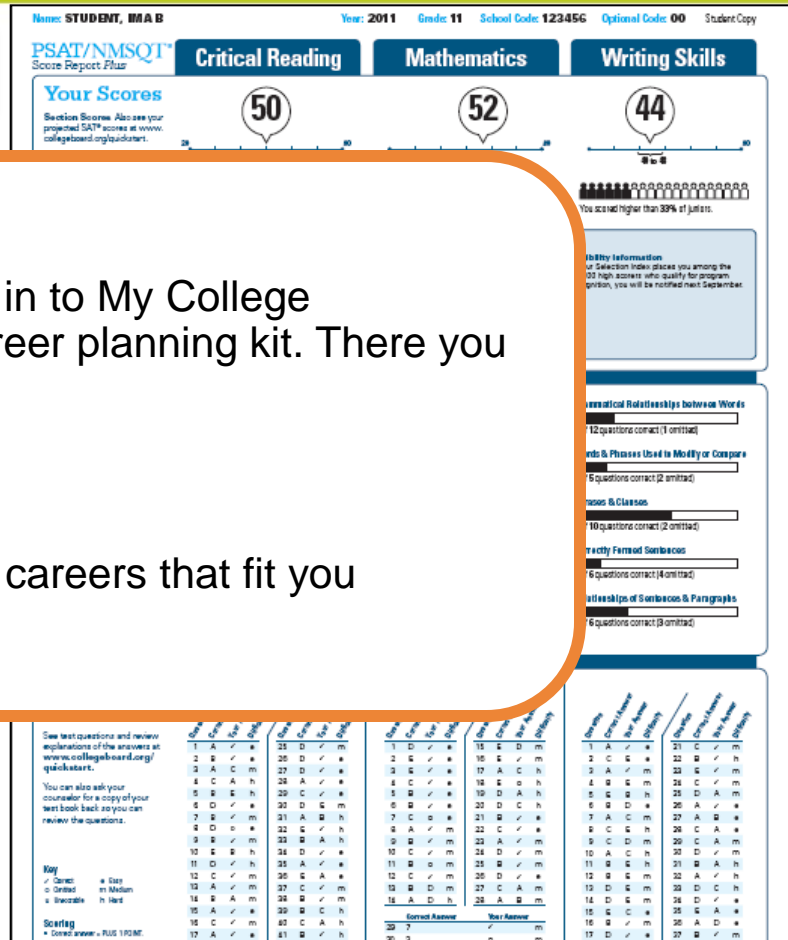
On test day, you told us that you're interested in **Sport & Fitness Administration/Management**. To learn more about college majors, visit MyCollegeQuickStart™. There you can also:

- Learn about related careers
- Search for colleges
- Take a personality test

Take the next step today! Go to www.collegeboard.org/quickstart and sign in using your code below.

Online Access Code: **A02670146P**

Next Steps



What's next?

Use the access code on your report to log in to My College QuickStart, a personalized college and career planning kit. There you can:

- Search for colleges
- Get a personalized SAT study plan
- Take a personality test to find majors and careers that fit you

www.collegeboard.org/quickstart

Next Steps

Go online to see your projected SAT scores, learn how to improve them, and find critical college and career planning information.

On test day, you told us that you're interested in **Sport & Fitness Administration/Management**

To learn more about college majors, visit My College QuickStart™. There you can also:

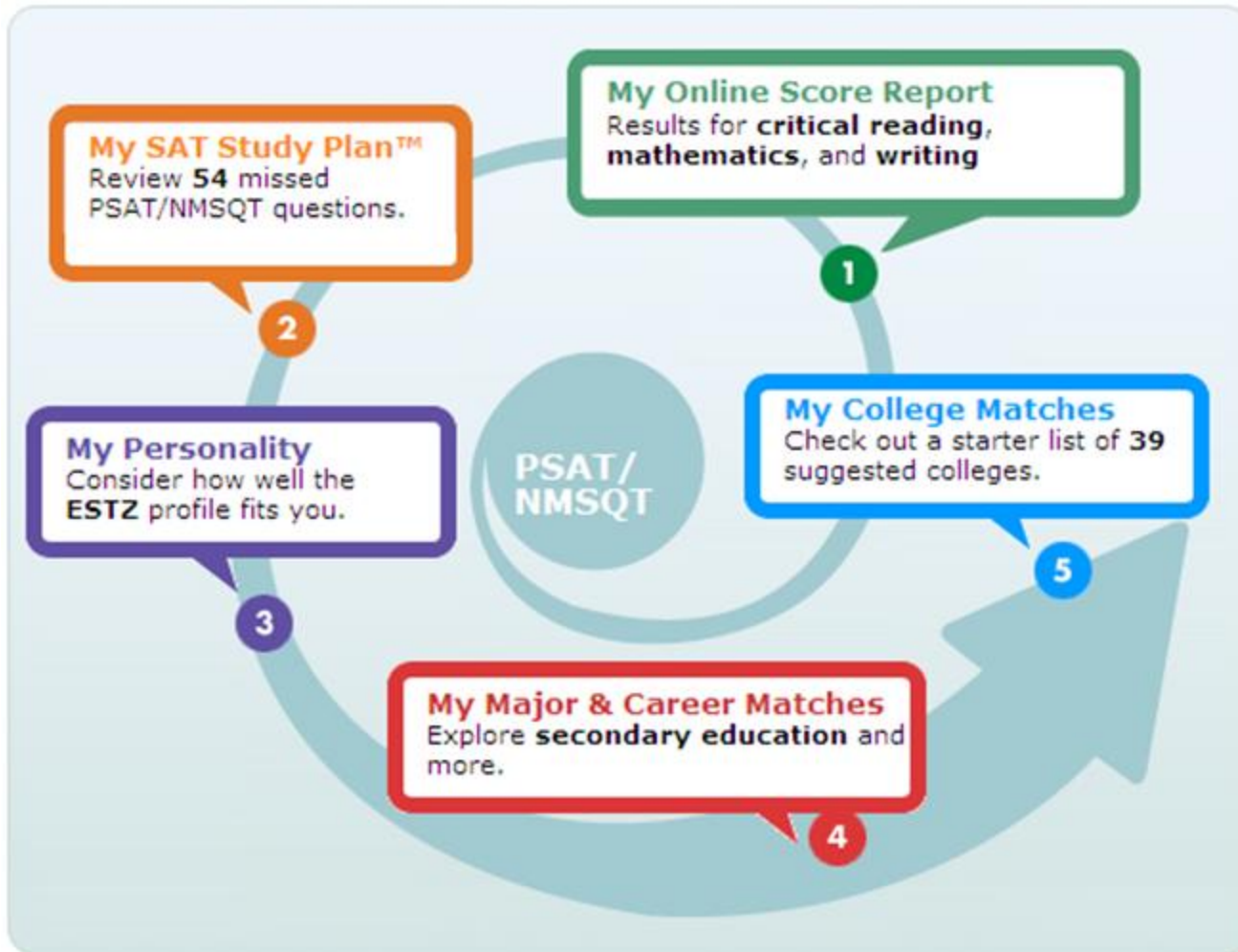
- Learn about related careers
- Search for colleges
- Take a personality test

Take the next step today! Go to www.collegeboard.org/quickstart and sign in using your code below.

Online Access Code
A02670146P



My College QuickStart



My College QuickStart

My Online Score Report

- Projected SAT® score ranges
- State percentiles
- You can filter questions
- Questions and answer explanations

My College Quickstart

Home > My Organizer > My College QuickStart > My Online Score Report

My Online PSAT/NMSQT Score Report

Critical Reading Mathematics Writing Skills

Your Score

Section Score **50**

Score Range **46 to 54**

Projected SAT Score Range **470 to 570**

National Percentile
You scored higher than 72% of juniors in the nation

State Percentile
You scored higher than 80% of juniors in your state

Your Skills **Your Answers**

Filter your answers by

-- skills --

-- difficulty --

correct answers (✓) incorrect answers omitted

Submit

Q#	Correct Answer	Your Answer	Difficulty	Content Skill	Process Skill
01	D	✓	hard	Data, Statistics + Probability	Connections
02		omitted	easy	Number + Operations	Representation
03	C	✓	medium	Algebra + Functions	Problem Solving

My College QuickStart

My SAT Study Plan™

- Personalized skills to improve
- SAT practice questions
- An official SAT practice test

My SAT Study Plan™

Study Plan Home Meet the SAT Critical Reading Mathematics Writing **Practice Test**

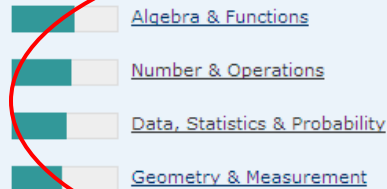
Review & Practice My Skills Feedback Get Test-Taking Advice

My Skills Feedback

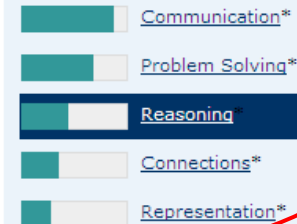
This feedback was created especially for you, based on your PSAT/NMSQT results.

1. Select a skill with a lower performance bar and review the test questions you answered incorrectly. Then try the question again and read the answer explanations.
2. If you find the practice questions too easy, you're probably ready for the next harder level. If you find them too hard, try the next easier level.

Content Skills



Process Skills



* These math-only process skill groups were not included on your Score Report *Plus*.

Skill Group: Reasoning

3 of 7 correct (1 omitted)

Definition	Answers	#	Questions
Develop and use mathematical arguments and proofs to explore the truth of conjectures and justify conclusions.	Omitted	1	37 (view all)
	Incorrect	3	16, 26, 35 (view all)
	Correct	3	10, 22, 32 (view all)

Practice Now

Skills **too easy**? [Try some harder practice questions](#)

Skills **too hard**? [Try some easier practice questions](#)

My College QuickStart

INSIGHTS
I.D. ME
EXPLORE MAJORS
FIND A COLLEGE
RESEARCH CAREERS

I.D. ME

Introduction

QuickStarts

ORA Personality Profiler®

View My Profile

THE TROUBLESHOOTERS

ISTA

ISFA

ESTA

ESFA

THE TRADITIONALISTS

ESTZ

ESFZ

ISTZ

ISFZ

THE CATALYSTS

INFA

ENFA

ENFZ

INFZ

The Traditionalists

introverting
feeling

sensing
organizing

▶ **ISFZ The Provider**

ISFZs are responsible, caring, reserved, and cooperative. As an ISFZ you have a modest style of helping others in orderly and practical ways. You believe it is important to follow rules and laws; similarly, you adhere to routine and prefer to see traditions preserved with little change. You are prone to worry about things beyond your control and may appear to be less confident because of your tendency to become stressed or agitated and not ask for help.

You like to be with a few close friends and family members and to offer personal support wherever and whenever needed. You are good at coordinating tasks and activities for everyone but may become overburdened by taking on other people's problems. Likewise, you don't ask for the recognition you would like to have. You are quietly loyal to family, friends, and groups and institutions that are important to you, and you hope others will be as loyal in return. You avoid interpersonal conflict at all costs.

As an ISFZ you are an organized and focused learner who is good at memorizing facts and details related to people. You reliably meet deadlines and obligations. You excel at coordinating and scheduling your own activities and keep yourself and your belongings neat and in good order. You prefer to work on projects and tasks that are useful in a practical way.

▶ **Your Strengths Include...**

- A practical and dependable nature.

About 6%
of MyRoad
participants

My College QuickStart

My College Matches

- Starter list of colleges
- Criteria to customize search
- Ability to save searches

City University of New York: Hunter College
New York, New York
College Board code: 2301

[Add to List](#)
[Compare](#)
[Find Similar](#)
[Map It](#)
[Print Full Profile](#)
[Send to a Friend](#)

At a Glance Deadlines	Admission SAT®, AP®, CLEP®	Cost & Financial Aid Majors	Academics & Support Housing & Campus Life	Sports International Students
---	--	---	---	---

Main Address
 695 Park Avenue
 New York, NY 10065
 (212) 772-4000
www.hunter.cuny.edu

Admission Office
 695 Park Avenue
 New York, NY 10065
 (212) 772-4490
admissions@hunter.cuny.edu
 Contact: William Zlata
 Director of Admissions

Type of School
 Public
 Liberal Arts College
 Four-year
 Coed
 Percent applicants admitted: 28%
 Regionally Accredited
 Middle States Association of Colleges and Schools
 College Board member

Calendar: Semester
Degrees offered:

- Bachelor's
- Master's

Setting
 Urban setting
 Very large city (over 500,000)
 Commuter campus

Size
 Total undergrads: 15,698
 First-time degree-seeking freshmen: 2,042
 Degree-seeking undergrads: 14,709
 Graduate enrollment: 5,560

My College QuickStart

INSIGHTS
I.D. ME
EXPLORE MAJORS
FIND A COLLEGE
RESEARCH CAREERS

CIVIL ENGINEERING

[Overview](#) | [High School Courses](#) | [College Courses](#) | [Career Connection](#) | [Perspectives](#)

Majors A-Z

My Interest ?

High
Medium
None

Updated: 8-31-2009

Topics


Construction Engineering & Management

Environmental Engineering

Geological Engineering

Geotechnical Engineering

Mining Engineering



Overview


The ancient Egyptians built pyramids and levees. The Romans built aqueducts and the Colosseum. The Persians and ancient Greeks undertook massive building projects. Civil engineering has been practiced for thousands of years.

Civil engineers plan, design, build, and repair just about anything you can think of. That includes buildings, bridges, dams, tunnels, highways, stadiums, sewage treatment plants, power plants, airports, and even satellites. These days they're also in demand to repair the damage caused by natural disasters such as earthquakes, hurricanes, and floods. And our crumbling public structures, from bridges to tunnels, all need civil engineers to repair them.

Civil engineers plan, design, build, and repair just about anything you can think of.

Civil engineers specialize in different areas. Transportation engineers, for example, tackle problems like traffic jams and air travel safety. Water resources engineers work to control the flow of rivers and ensure clean drinking water.

As a civil engineering major, you'll take classes in several fields before focusing on one. But you'll find there's overlap in some course work. For instance, you'll learn how to build structures that can stand up to earthquakes in both geotechnical and structural engineering. In a geotechnical engineering course, you'll focus on soil structure and foundation design. But when you study structural engineering, you'll be more concerned with designing



My College QuickStart

Log in to your personalized account at

www.collegeboard.org/quickstart

Wrapping up 1st semester...

○ Final Exams

- Wednesday: Periods 3, 5, 7
- Thursday: Periods 2, 4, 6
- Friday: Periods 1, 8

- Exam periods are 120 minutes!

- Early Release on Friday at 12:45pm!

Wrapping up 1st semester...

○ Final Grade Calculations

- Semester Grade (SG)
- Final Exam (SE)
- End-of-Course Test (EOCT)
- Final Grade (FG)

- $FG = SG \times .8 + SE \times .2$
- 10th grade Math II: $FG = SG \times .85 + EOCT \times .15$
- 9th grade Math II: $FG = SG \times .8 + EOCT \times .2$

Wrapping up 1st semester...

- ◉ Goal: A/B Honor Roll
- ◉ “C”s don’t cut it!
- ◉ Academic Probation
- ◉ All books must be returned by Fri, Dec 16

Wrapping up 1st semester...

- Report Cards – Friday, January 6
- Updated Transcripts
 - Check Naviance for updated GPA and class rank information
- Search for Summer Programs

○ Keystone Youth Policy Summit

- Application available now at <http://youthpolicysummit.org>
- Grades 10-11
- June 9-16, 2012
- Cost: \$100 + airfare (Fund pays \$500 per person)

Strategic Planning

- We will provide resources and opportunities to enhance the curriculum.
- We will improve student achievement by providing both support and enrichment to meet the needs of all students.
- We will encourage stakeholder involvement.
- We will develop a positive school culture, climate, and reputation.



Strategic Planning

Initial Meeting for all
Action Teams

Tuesday, January 10

3:15pm

Room 804

Spring Events

- **2nd Semester**

- January 3, 2012 – Teacher Workday

- January 4, 2012 – Back to School (odd)

Spring Events

- **2nd Semester**

- January 3, 2012 – Teacher Workday

- January 4, 2012 – Back to School (odd)

Spring Events

○ French Research Exchange Program

- Application available on Monday, Dec. 12
- Grades 10-11
- Application Deadline: Friday, January 6
- Interviews: January 10-12

Spring Events

○ French Research Exchange Program

- Visit: February 3-10, 2012
- Host Family Meeting: Tuesday, January 24
- Cost: \$750 paid in monthly installments of \$150
- Trip: September 26 – October 5 (fall break)

Spring Events

○ Peer Mentoring Program

- Application available Monday, January 9
- Application Deadline: Tuesday, January 17
- Grades 9-11

Holiday Rock!

- **Friday, December 9**
 - Friday, January 20
 - 3:15pm – 5:30pm
 - \$5 or \$10 per person
 - Tickets on sale tonight!

Spring Events

- **Rockdale Regional Science & Engineering Fair**
 - Friday, January 27
 - Grades 10-12
 - Judging, 1pm – 4pm
 - Public viewing, 5pm – 6pm
 - Awards in RCHS theater, 6pm – 7pm

Spring Events

- **Chili Cook-off and Bingo Night**

- Saturday, January 28
- Grades 9-12
- Chili Dinner at 5pm – 6:30pm
- Bingo at 6:30pm – 8pm
- Tickets available tonight!

Spring Events

- **A/B Honor Roll Celebration**
 - Wednesday, January 25
 - 12:45pm – 1:30pm
 - Cafetorium

Spring Events

○ **Grade-Level Meetings**

- January 26 – 11th grade
- February 16 – 10th grade
- March 15 – Rising 9th grade
- March 29 – 9th grade
- April 26 – 11th grade
- May 17 – Rising 9th grade

Spring Events - February

- February 3-10: French visitors here
- February 4: France Dance
- February 20-24: Winter Break
- February 29: Mock Job Fair (11th grade)

Spring Events - March

- **Georgia Junior Science and Humanities Symposium**
 - Applications completed in January
 - Grades 10-12
 - March 4-6
 - UGA
- **Spring Flower Sale**
 - Order forms distributed March 5
 - Order forms due March 28
 - Pick-up date: April 19
- **Mock Internship Interview Day (11th grade)**
 - Friday, March 9
 - 8:30am

Spring Events - March

- **NCSSSMST Student Research Conference**
 - Applications available March 15
 - Application deadline: March 23
 - Grades 10-11
 - Illinois Institute of Technology – Chicago
 - June 20-23, 2012
 - Cost: Airfare

Spring Events - March

- **Magnet Research Symposium & Luncheon**
 - Saturday, March 17
 - Grades 9-12
 - 10th – 12th grade students present
 - 9th grade families provide lunch
 - 8:30am – 1pm
- **Georgia Science & Engineering Fair**
 - March 30-31
 - UGA
 - Grades 10-12 (those advancing from RRSEF)

Spring Events - April

- **Spring Break**
 - April 2-6

- **RMSST College Bus Tour**
 - 11th grade students and parents
 - April 3-5
 - \$200 per person

Spring Events - April

- **Magnet Family Picnic**
 - April 19, 5:30pm – 7:30pm
 - Grades 9-12
 - Pine Log Park
 - Teacher Appreciation
 - Plant Sale Pick-Up

Spring Events - April

- **9th grade Poster Session**
 - April 25, 3:15pm – 5pm
 - 9th grade participants
 - 11th grade judges
 - Parents welcome

- **Superintendent's Awards Ceremony**
 - April 24, 6:30pm
 - Top Ten in grades 10-12

Spring Events - May

- **Ambassador Program**

- Applications available May 1
- Application Deadline: May 8
- Grades 9-11

- **MASA Student Council**

- Applications available May 1
- Application Deadline: May 8
- Grades 9-11
- Five students per grade-level

Spring Events - May

- **AP Exams**
 - May 7-18
 - Exams: \$87 each
 - Registration deadline will be in early March
 - Free/reduced lunch: 1st exam free
 - 4th exam paid for by Magnet Fund

Spring Events - May

- **Magnet Awards Banquet**
 - Georgia Tech Hotel and Conference Center
 - Friday, May 11
 - Students free
 - Parents: \$25.00 each
 - Maximum of two guests per 9th-11th student
 - Maximum of four guests per senior

Spring Events - May

- **Online Summer Course Meeting**
 - May 16, 3:15pm
- **Last day of school**
 - Thursday, May 24
- **Graduation Ceremony**

Thank you for coming!

- Long-sleeve T-shirts on sale tonight for \$20
- Chili Cook-off and Bingo Night tickets on sale tonight
- Let's finish strong!!!

Holiday Homework

- Visit www.collegeboard.com/quickstart
- Juniors – Work on academic resume on Naviance
- College search on Naviance